

MEMORANDUM

To: Dona Butler
From: Lisa Peterson, Homeowner Recovery Program Manager *(lmp)*
CC: Sarah Nolan, APM - Administration and Finance
David Linkinhoker, Construction Coordinator
Date: June 17, 2025
Subject: Mobile Home Unit (MHU) Floorplans

The Volusia County Transform386 Single Family Repair and Replacement Program implementation vendor, LEMOINE Disaster Recovery, has requested approval of additional MHU floorplans through the program.

The request is being made based a new MHU installation provider being partnered with that has an established relationship with another MHU manufacturer, Live Oak, within the existing approved price ranges.

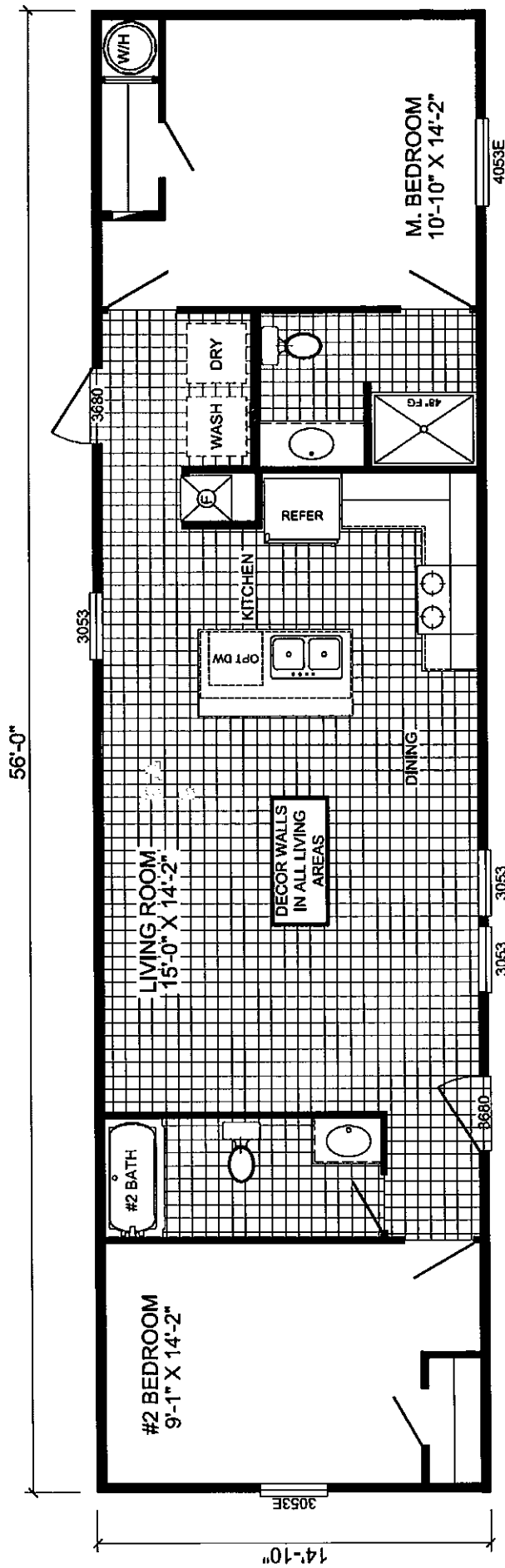
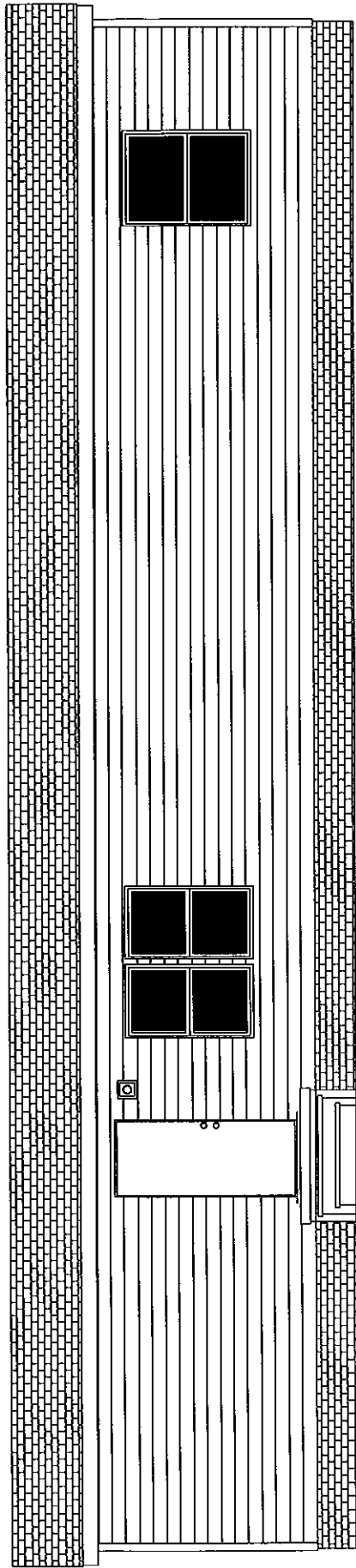
Upon review of the provided floorplans staff is recommending approval of the following options:

Type	Bed/Bath #	Name	Approximate Square Footage (sq ft)
Singlewide	2/2	Yellow Jacket	830 sq ft
Singlewide	3/2	Bolt	1130 sq ft
Singlewide	4/2	X-5764A	1130 sq ft
Doublewide	2/2	Mill Creek 2	1040 sq ft
Doublewide	3/2	Sprinter	1456 sq ft
Doublewide	3/2	Trenton	1352 sq ft
Doublewide	4/2	Spark	1456 sq ft

Approved by:
Dona Butler
Dona Butler, Director

7/17/25
Date

YELLOW JACKET



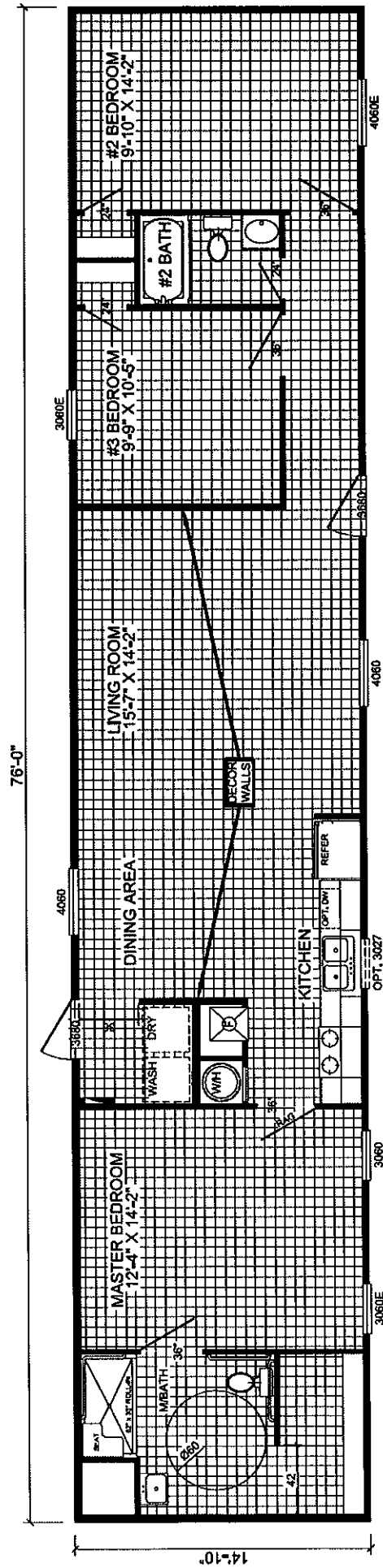
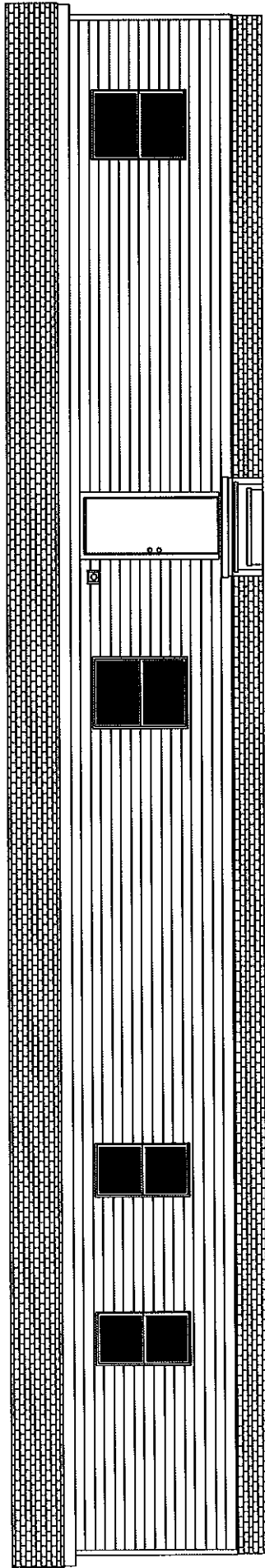
V-5562K 2-BEDROOM / 2-BATH 16 X 60 - Approx. 830 Sq. Ft.

Date: 06/25/20

* All room dimensions include closets and square footage figures are approximate.

* Live Oak Homes reserves the right to change product offering at any time.

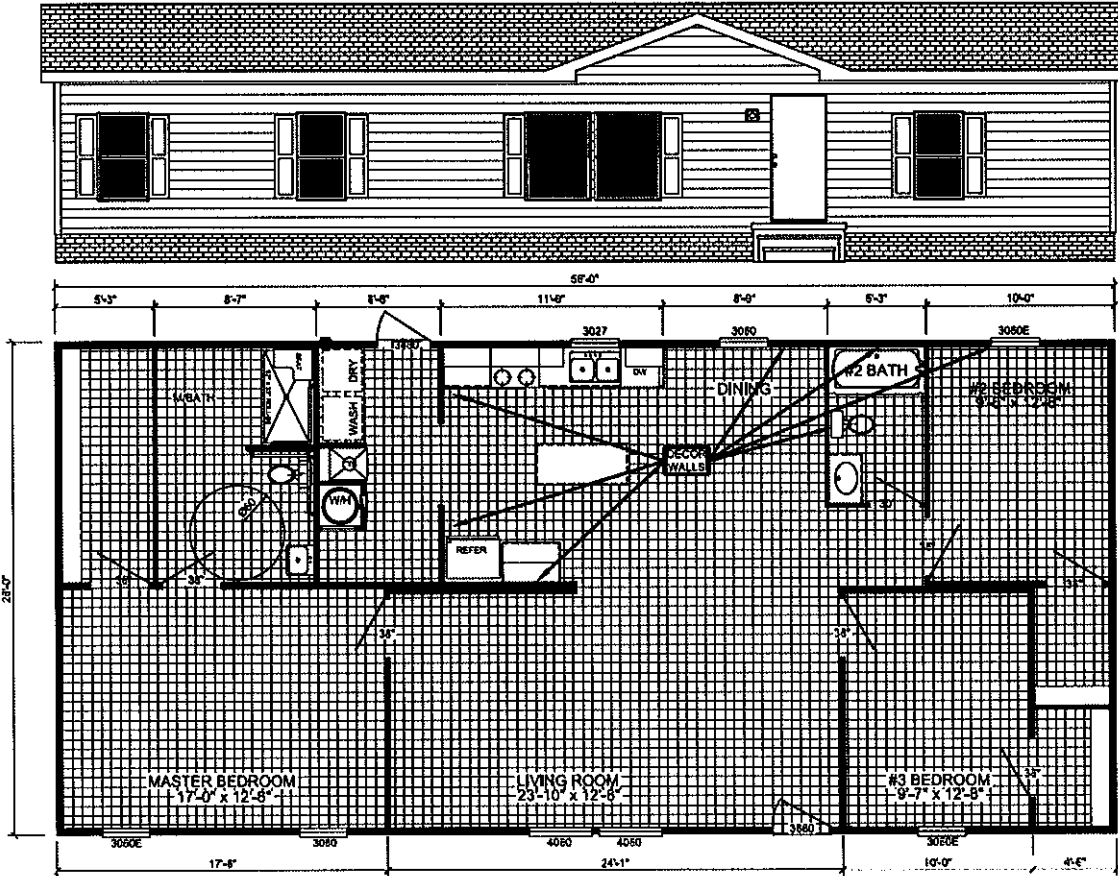
BOLT



L-57631 (ADA COMPLIANT)
3-BEDROOM / 2-BATH
16 X 80 - Approx. 1130 Sq. Ft.

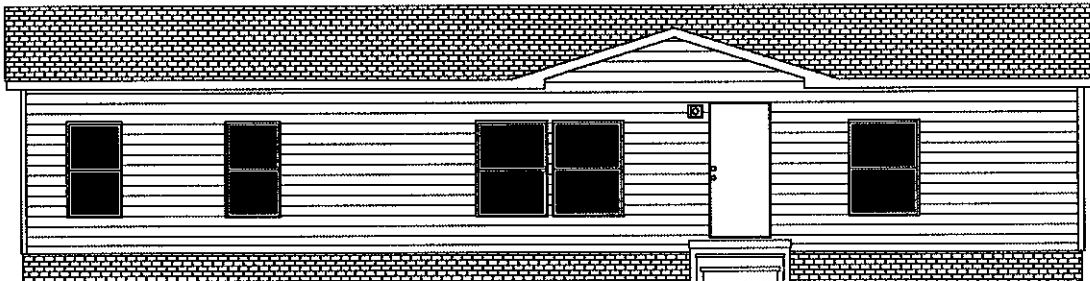
Date: 08/02/22

SPRINTER



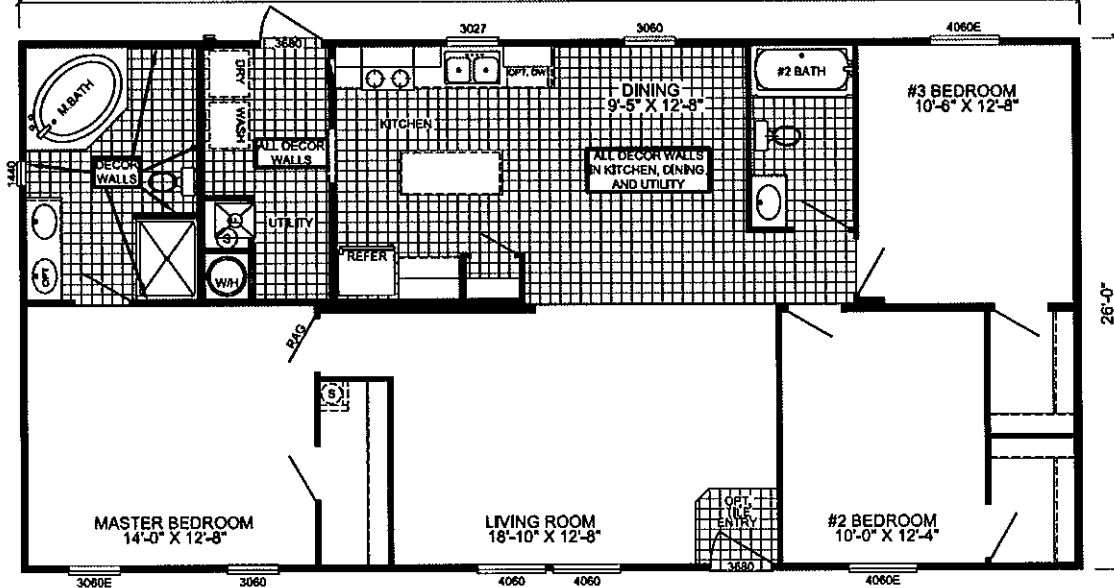
L-2563G
3-BEDROOM / 2-BATH
28 x 60 - Approx. 1456 Sq. Ft.

TRENTON



SHOWN WITH OPTIONAL DORMER

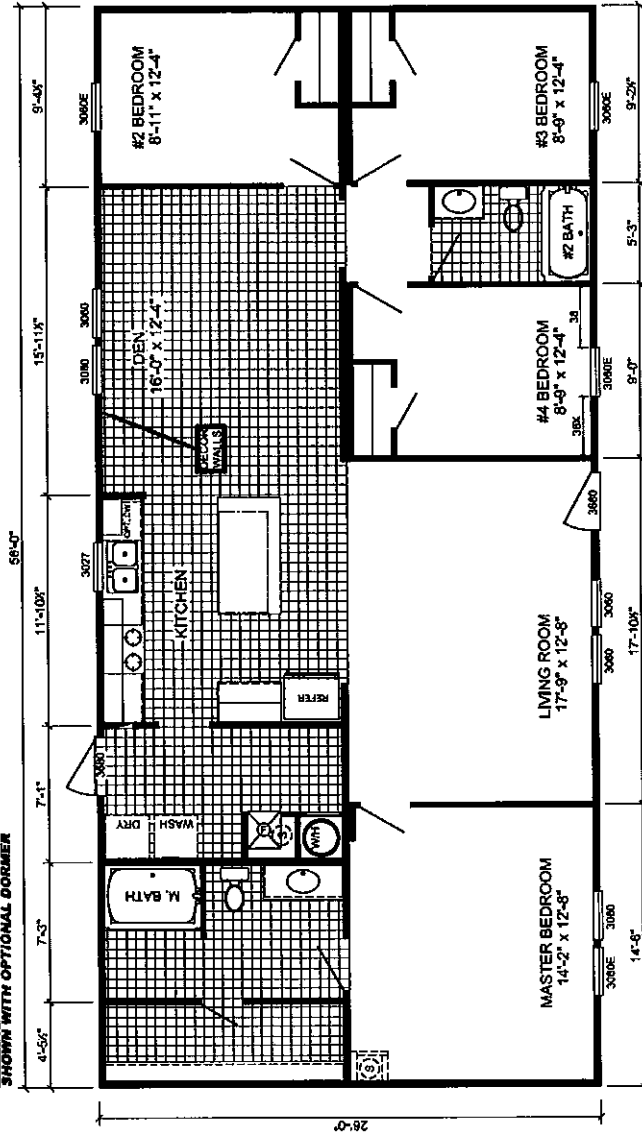
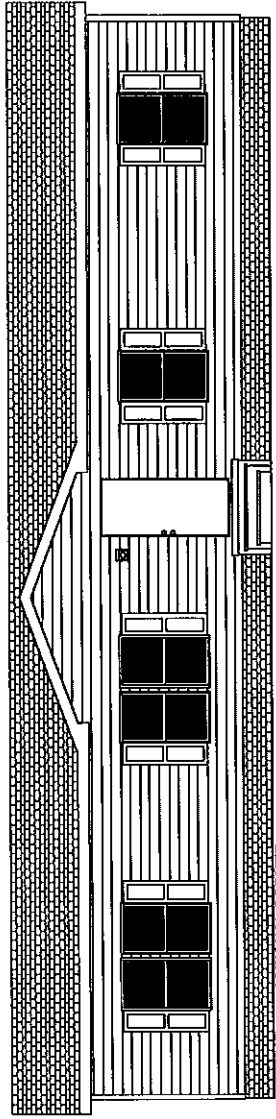
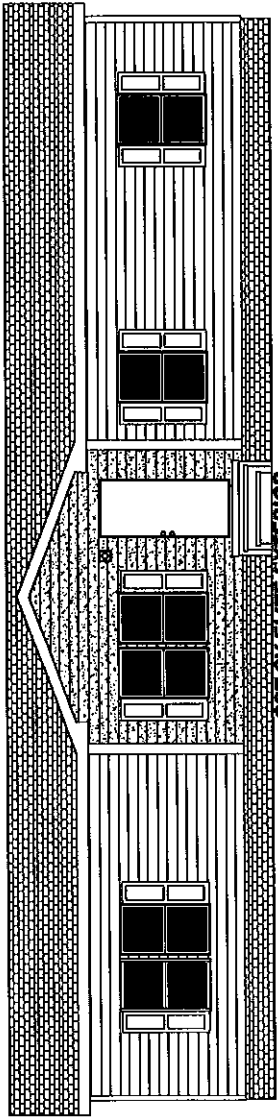
52'-0"



V-25231 - SUWANNEE VALLEY
3-BEDROOM / 2-BATH
28 X 56 - Approx. 1352 Sq. Ft.



SPARK



L-2564F - RUNNER
4-BEDROOM / 2-BATH
28 x 60 - Approx. 1456 Sq. Ft.